

What are the details of the watershed improvement plans for each of the 5 parcels* in the restoration project?

Stream Restoration

- Authorization granted for restoration for all reaches of Primrose Creek
- Work has begun and is proceeding
- Includes inlet structure
- Outlet structure designs are being discussed

DEP @ Solebury Township
Mtg. 9/18/2018

NHCS* - New Hope Crushed Stone, PG* - Peter Grover, 2 PECO* parcels, Hotel* -Hotel du Village

PCWA and Solebury School share the WIP goal with DEP that the lower reach of Primrose Creek is equally important to restore as the upper reach.

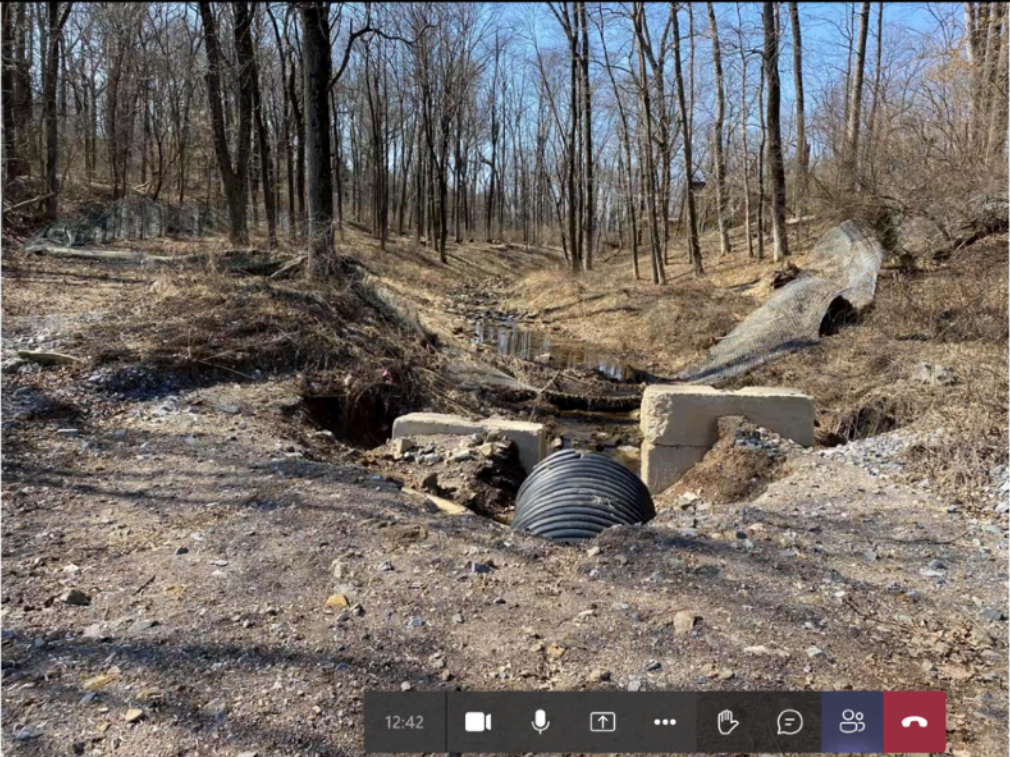
Safari File Edit View History Bookmarks Window Help

teams.microsoft.com

Manage your Apple ID Join conversation

"Microsoft Teams" Notifications
Notifications may include alerts, sounds, and icon badges.

Upstream
Prior to
repair



12:42

Koury, Daniel

+8

+12*****43

DK Koury, Daniel

+12*****33

RS Shustack, Randy

People

Share invite

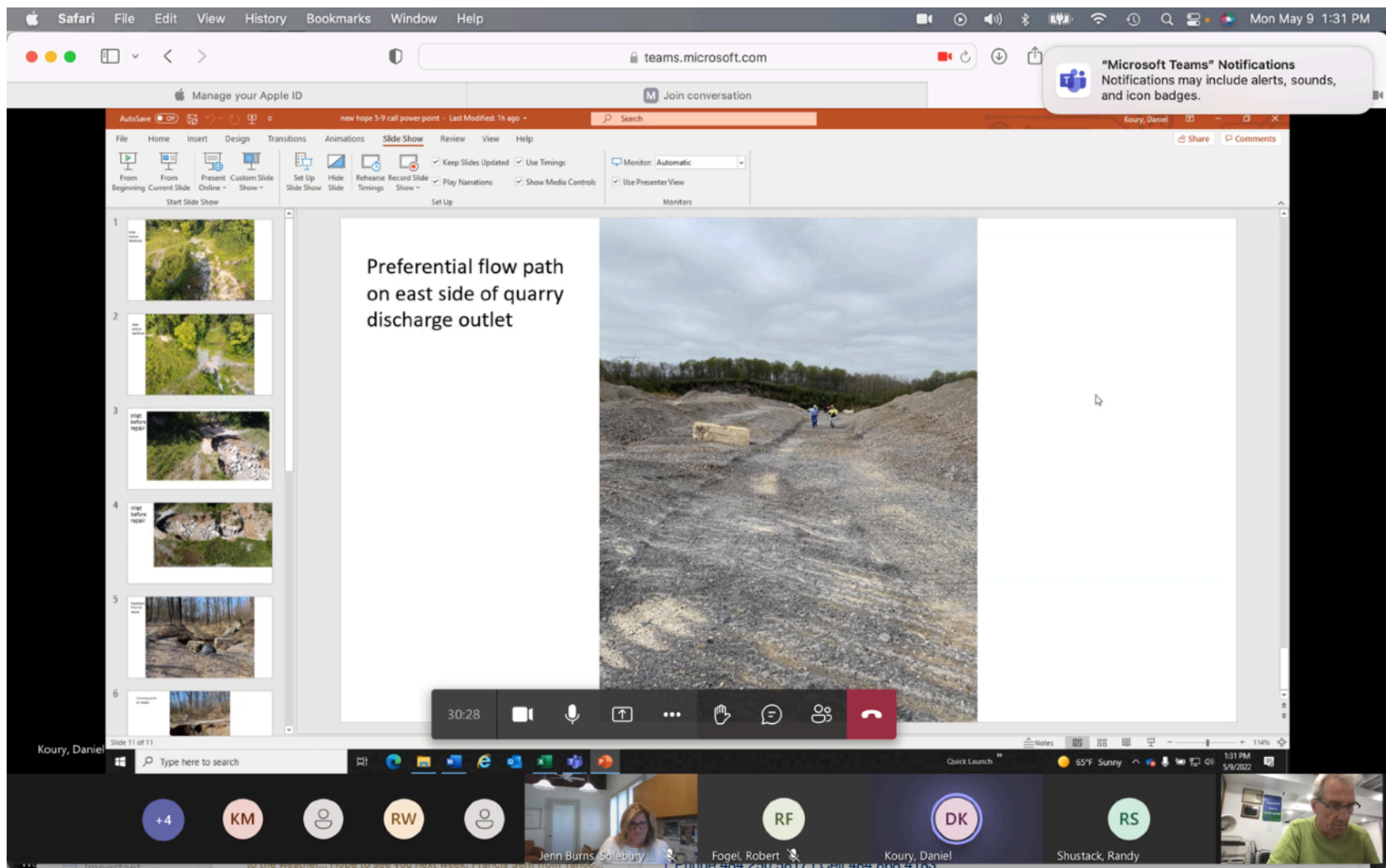
Currently in this meeting (11)

- FC Francis Collins (Guest)
- RF Fogel, Robert Organizer
- FC Francis Collins (Guest)
- SB Jenn Burns, Solebury School...
- KM Kevin M. (Guest)
- DK Koury, Daniel
- VN Nurk, Virginia
- RS Shustack, Randy
- SS Sticker, Shannon
- RT Tallman, Richard
- RW Wuenschel, Rosemary
- +12*****33
- +12*****43

Important to the weather... Hope to see you next week. Francis came from Rambo...

Cell 404-200-4103

What are the final plans for the NHCS parcel Inlet ?



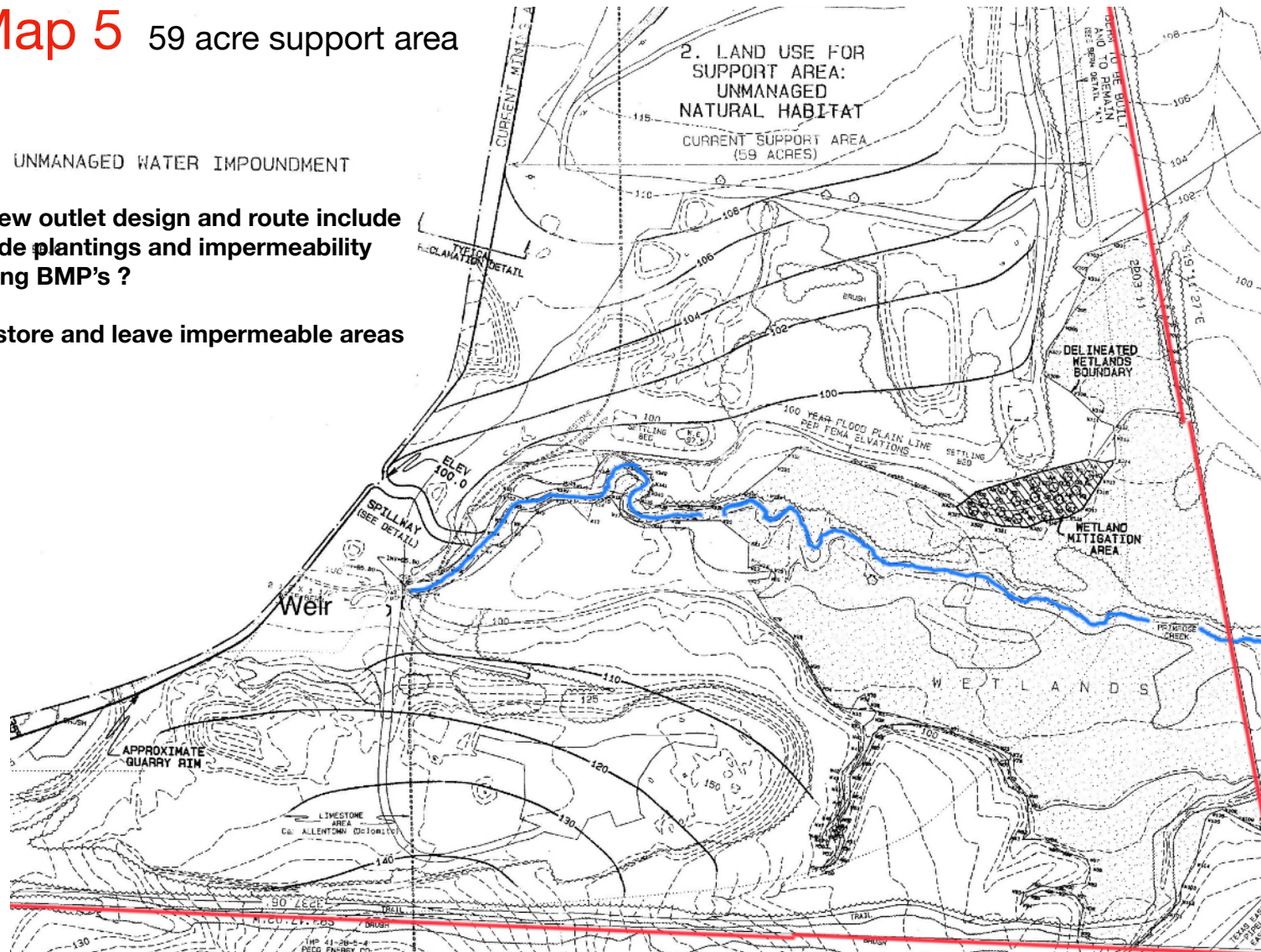
What are the plans for the outlet & riparian corridor from quarry/lake to PG (Peter Grover) parcel?
Will restoration efforts be completed and ready in time (September 1) to handle the flow of supercell storms?

Map 5 59 acre support area

UNMANAGED WATER IMPOUNDMENT

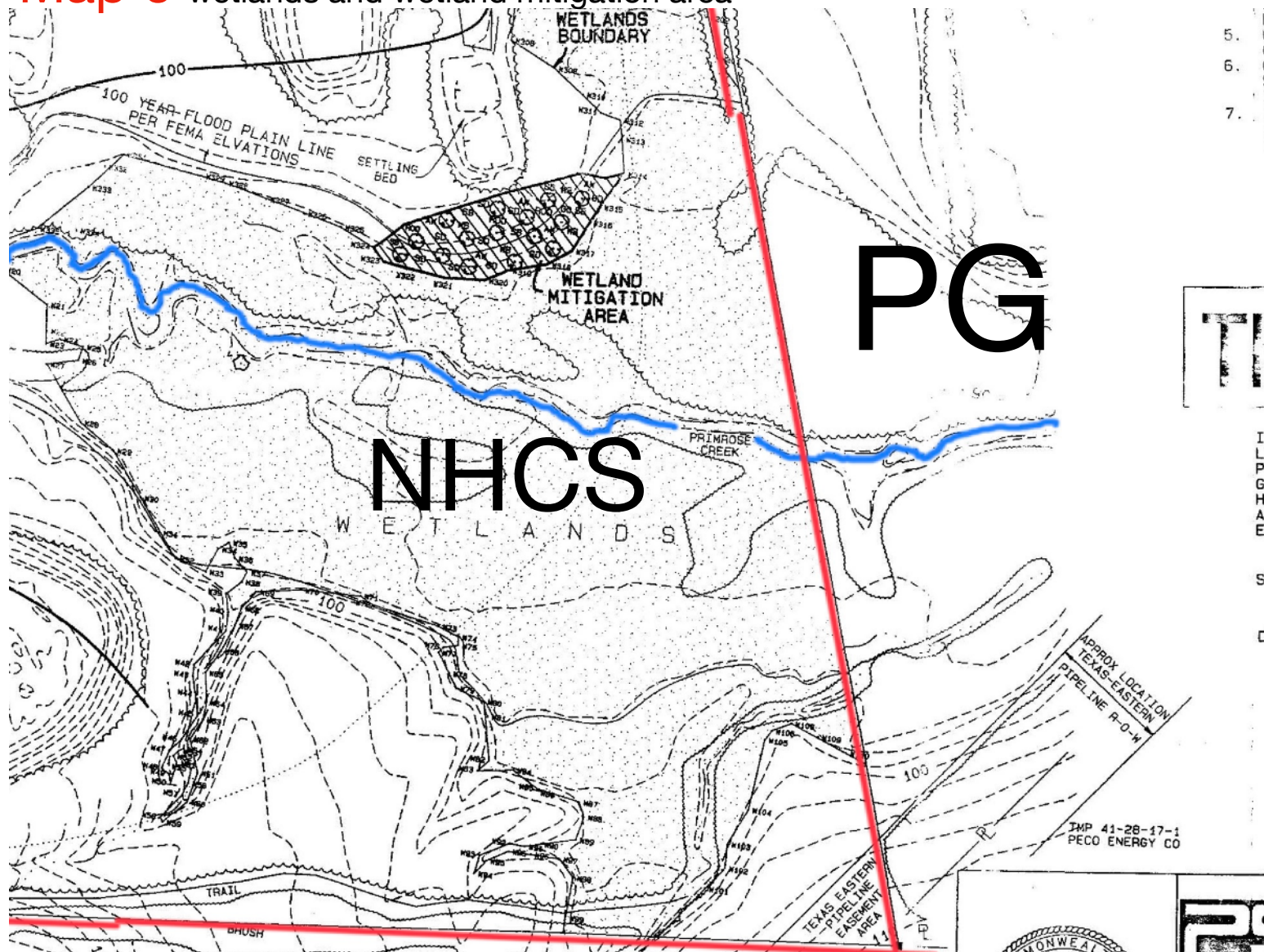
Will the new outlet design and route include stream side plantings and impermeability remediating BMP's ?

“Don’t restore and leave impermeable areas naked!”



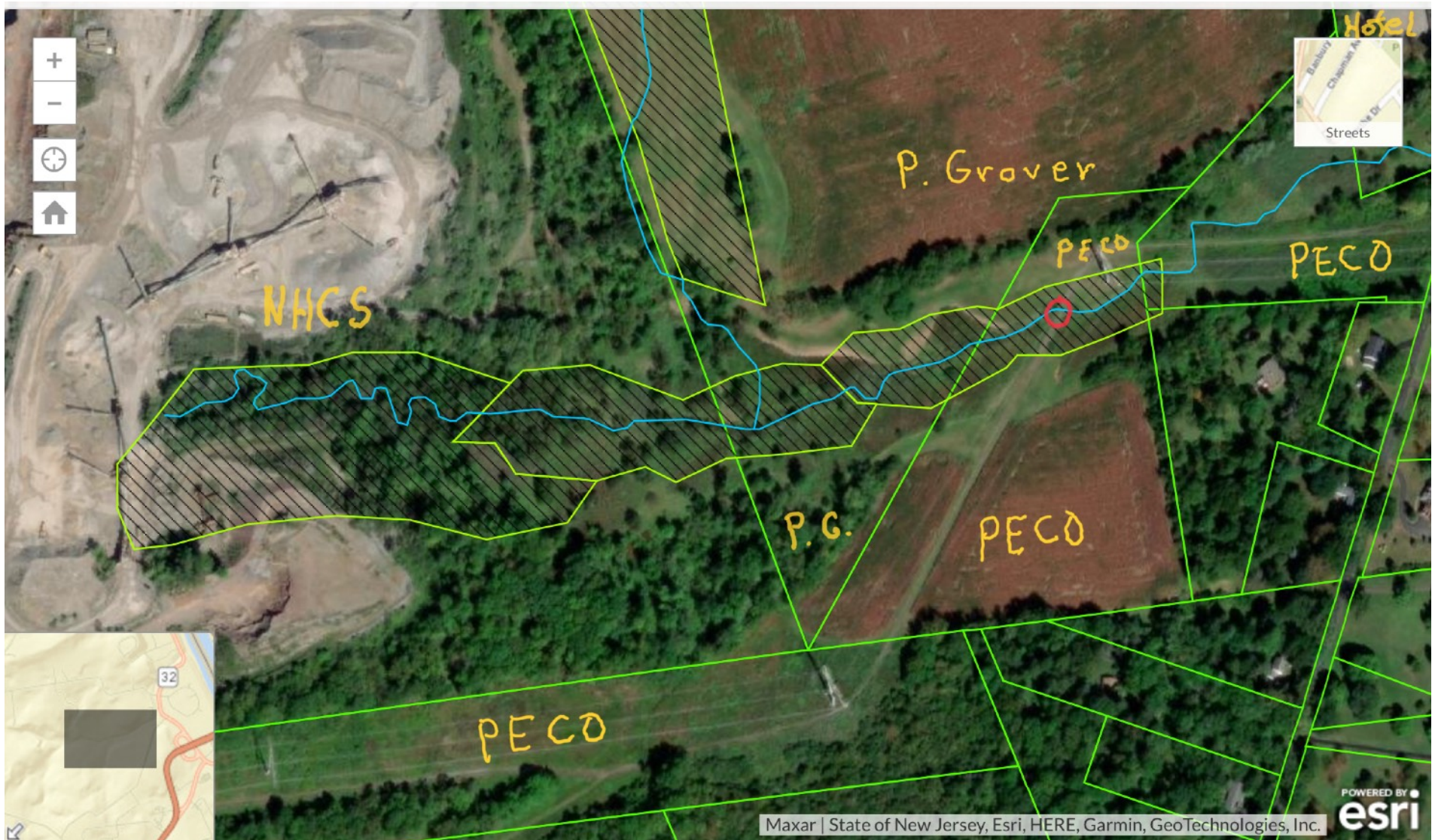
What are the plans for the 59 acres of the NHCS parcel support area.?

Map 6 wetlands and wetland mitigation area



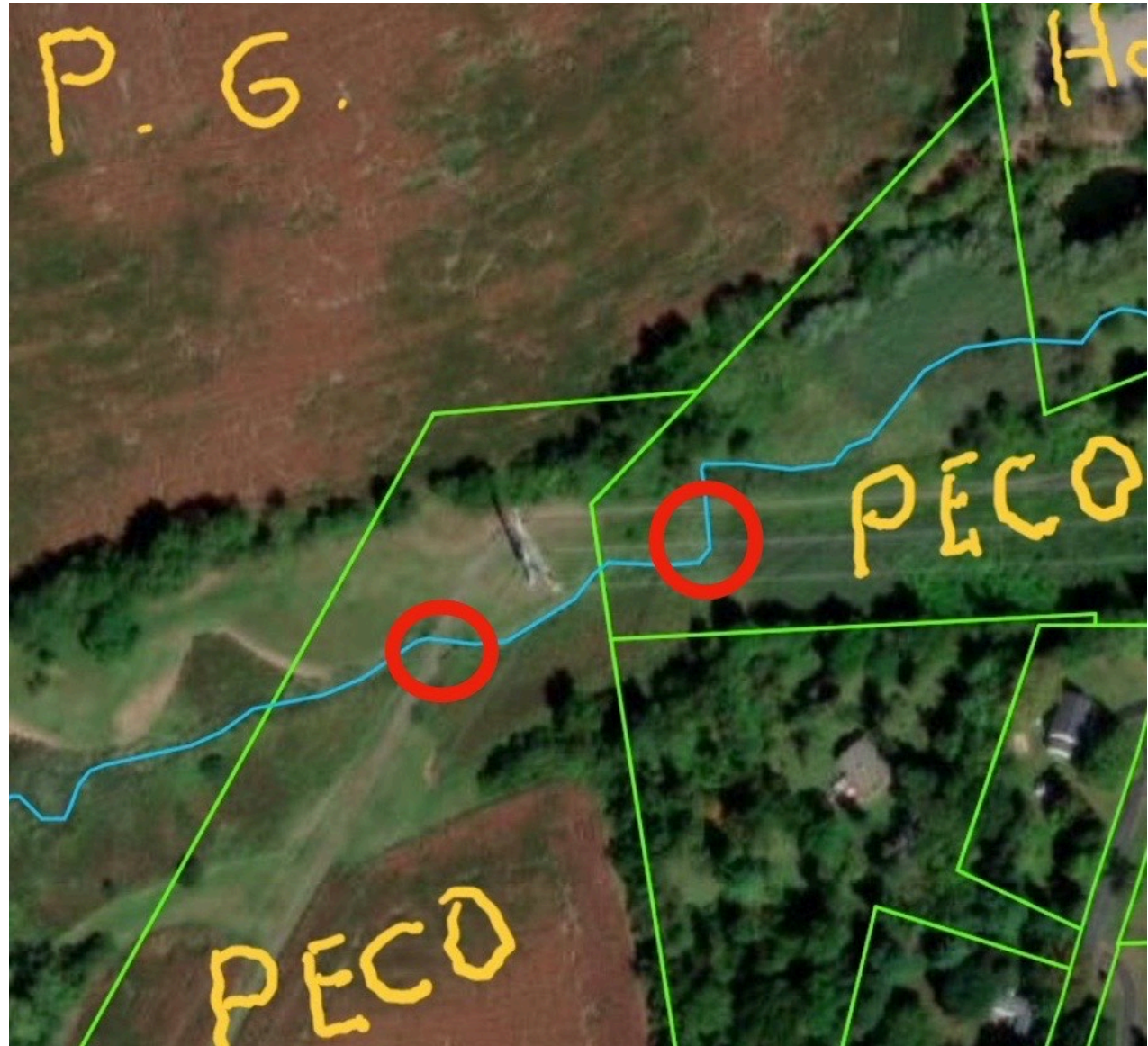
What are the plans for the NHCS wetlands and reconnecting the Primrose to the original channel on PG parcel?

Map 3 GIS wetlands, ○ culverts (2020)



What are the plans for the PG parcel wetlands and the PECO parcels Exceptional Value EV wetlands?

Concern is that agri “grazing” areas on the PG and PECO parcels adjacent to the riparian corridor will be further degraded when the spillover increases well beyond the current limit and the flow encounters constriction from two inefficient draining culverts on PECO parcels.



Will DEP or PECO provide culvert upgrades and maintenance after the NHCS forfeiture?

Numbers

- Bond liability
 - \$1,144,029 Amount of bond approved under PILB
 - \$464,882 paid in to date by NHCS
 - \$54,341 current annual payment
- Total reclamation yardage approximately 220,000 moved to date, with 152,000 remaining
- Approximately 2,100 lineal feet of highwall reclaimed, approximately 2,100 lineal feet remain

For More Information

Monthly Updates, Inspection Reports,
Communications and more, posted as available.

Please visit: www.dep.pa.gov

Regional Resources>Southeast Region>Community Information

Thank you to all partners for their efforts to make Primrose Creek Watershed WHOLE.

PCWA

Inlet Outlet NHCS plans